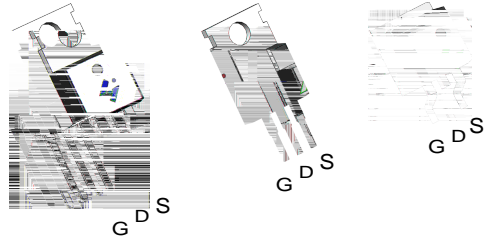




Feature

-
-
-
-

Pin Description



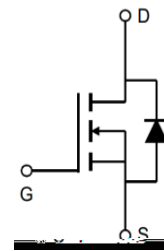
TO-220FB-3L

TO-220FB-3S


TO-263-2L

Applications

-
-



Ordering and Marking Information

	TKVUEGGEOÓEHÙ
---	---------------

HY1904P/B/M

Absolute Maximum Ratings

Symbol	Parameter	Rating	Unit
Common Ratings °C			
Mounted on Large Heat Sink			
θ			
θ			

°C

Electrical Characteristics °C

Symbol	Parameter	Test Conditions	HY1904			Unit
			Min	Typ.	Max	
Static Characteristics						

HY1904P/B/M

Electrical Characteristics (Cont.) °C

Symbol	Parameter	Test Conditions	HY1904			Unit
			Min	Typ.	Max	
Dynamic Characteristics						
Gate Charge Characteristics						

Typical Operating Characteristics

Figure 1: Power Dissipation

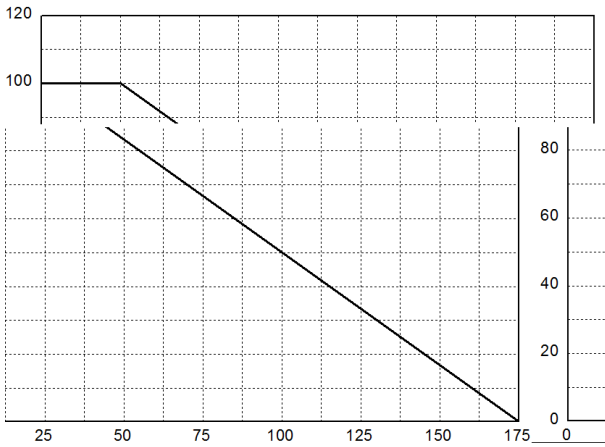


Figure 2: Drain Current

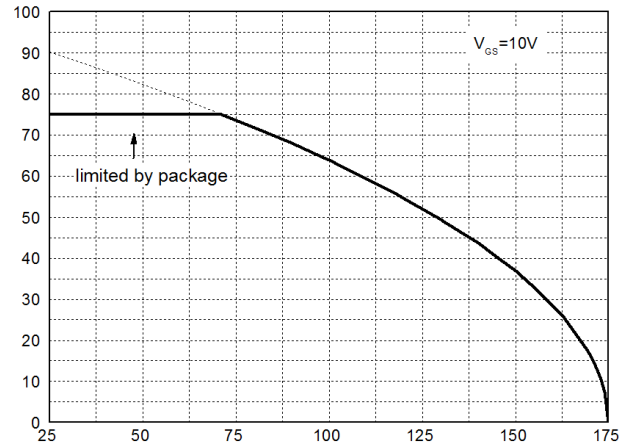


Figure 3: Safe Operation Area

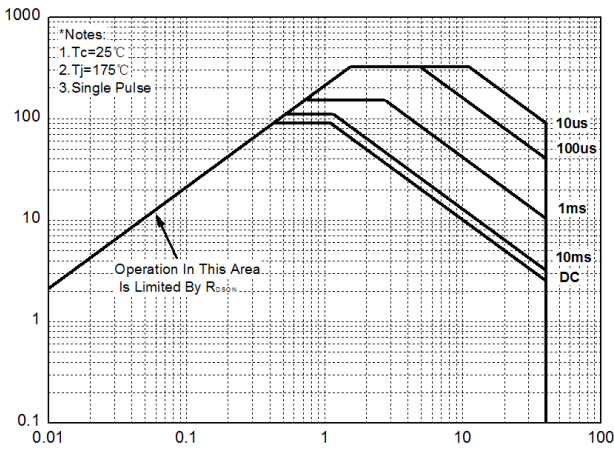


Figure 4: Thermal Transient Impedance

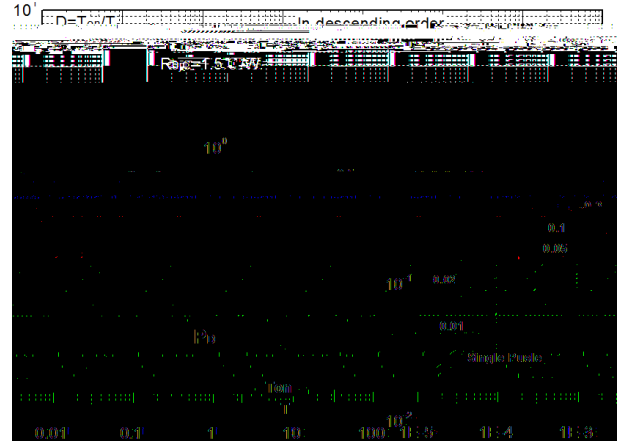


Figure 5: Output Characteristics

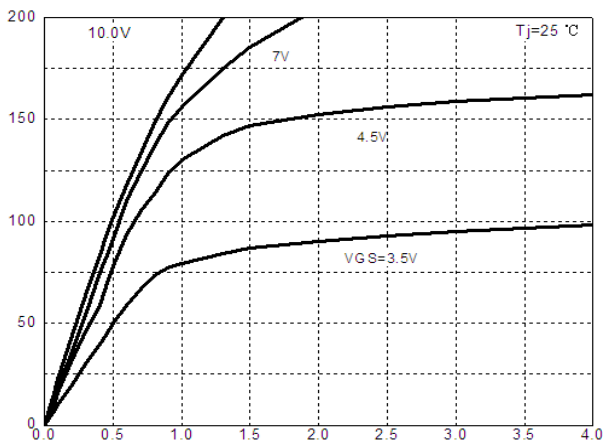
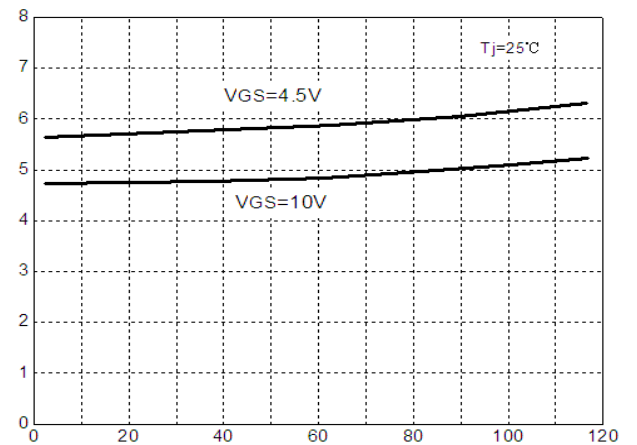


Figure 6: Drain-Source On Resistance



HY1904P/B/M

Typical Operating Characteristics(Cont.)

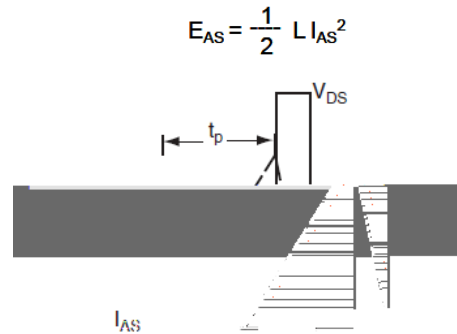
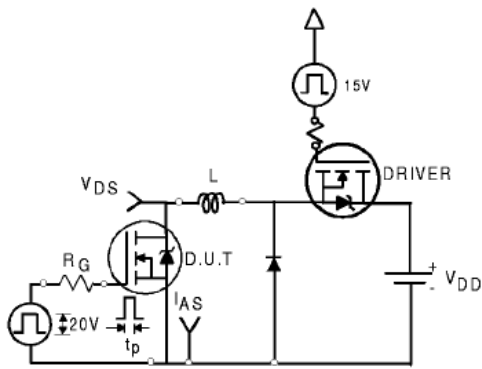
Figure 7: On-Resistance vs. Temperature

Figure 8: Source-Drain Diode Forward

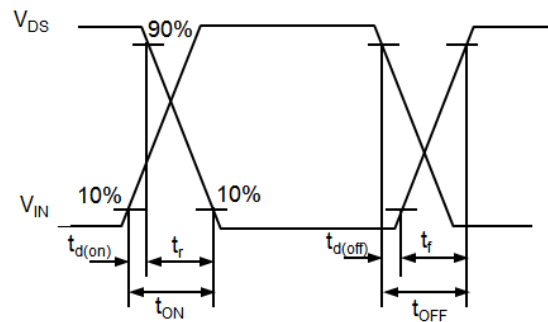
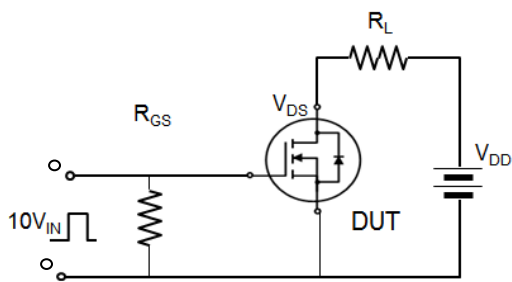
Figure 9: Capacitance Characteristics

Figure 10: Gate Charge Characteristics

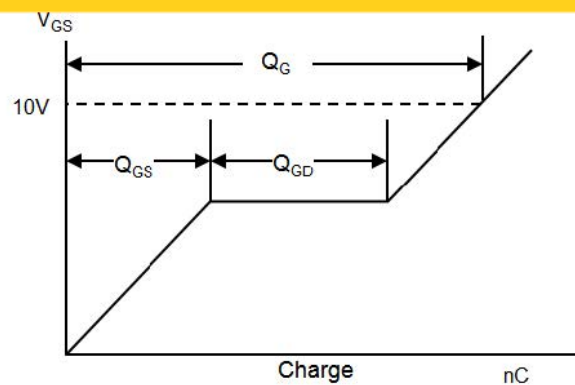
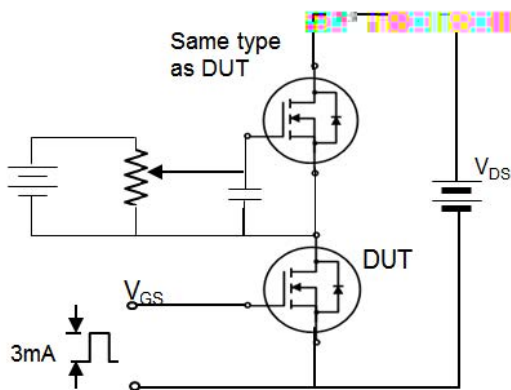
Avalanche Test Circuit



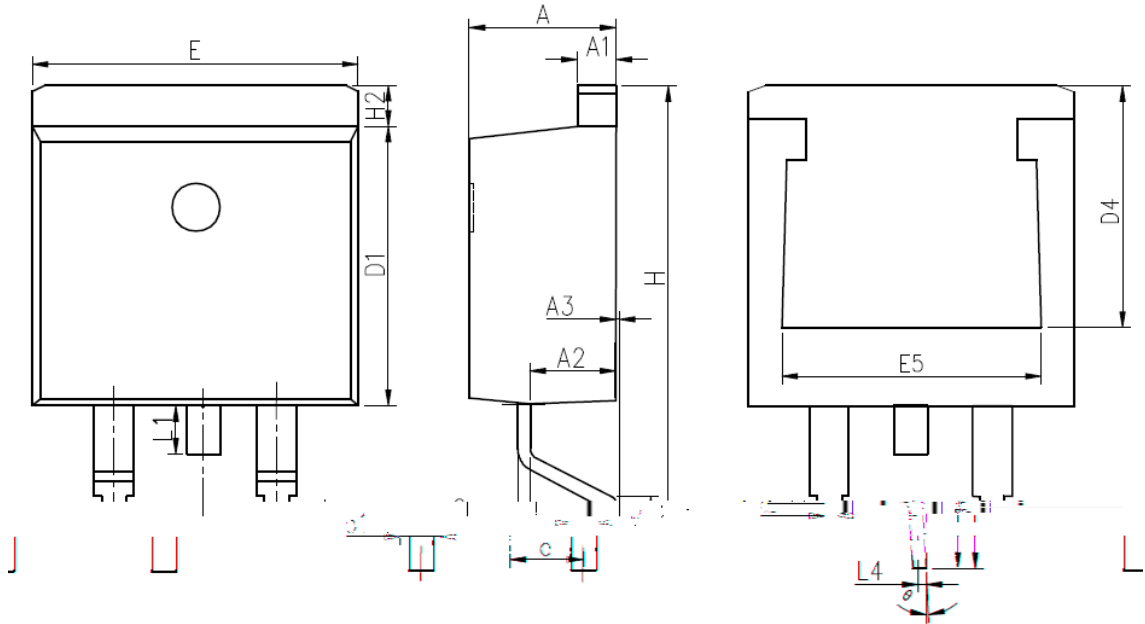
Switching Time Test Circuit



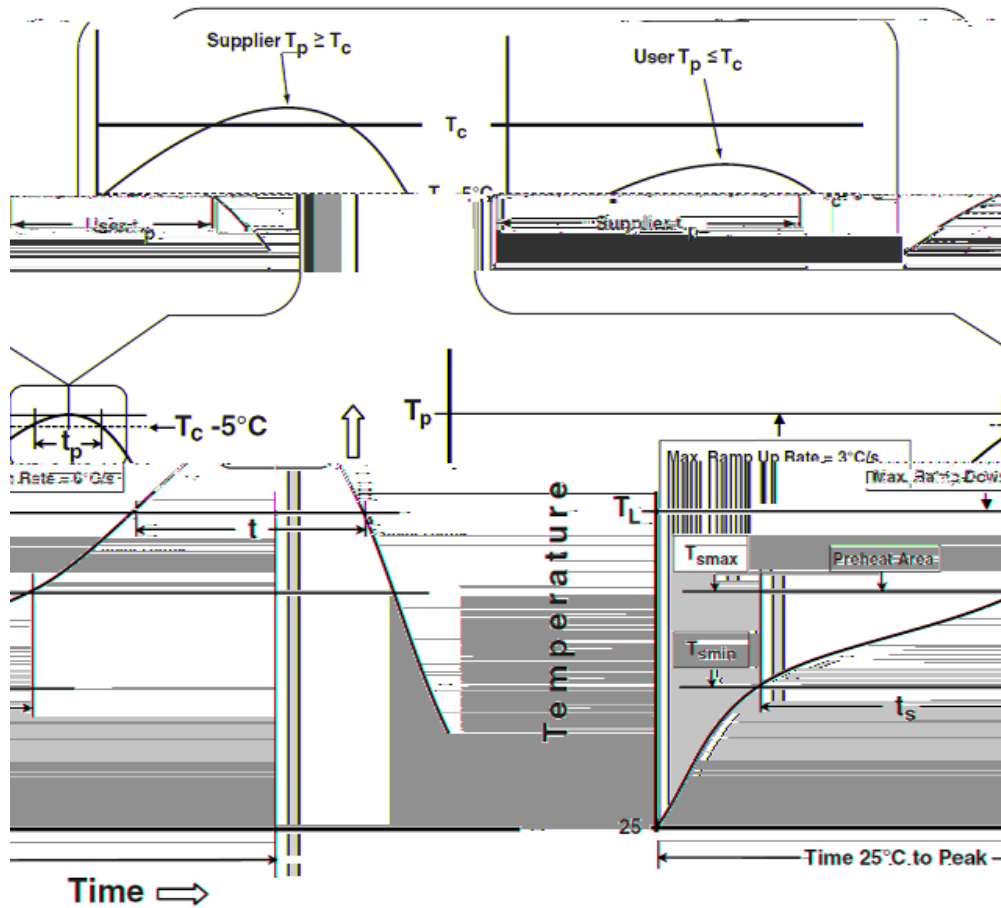
Gate Charge Test Circuit



TO-263-2L



Classification Profile



Classification Reflow Profiles

Profile Feature	Sn-Pb Eutectic Assembly	Pb-Free Assembly
Preheat & Soak		

HY1904P/B/M

Package Thickness	Volume mm <350	Volume mm 350

Package Thickness	Volume mm <350	Volume mm 350-2000	Volume mm
			2000

